

DLF Capital Greens Phase II , Shivaji Marg, Delhi



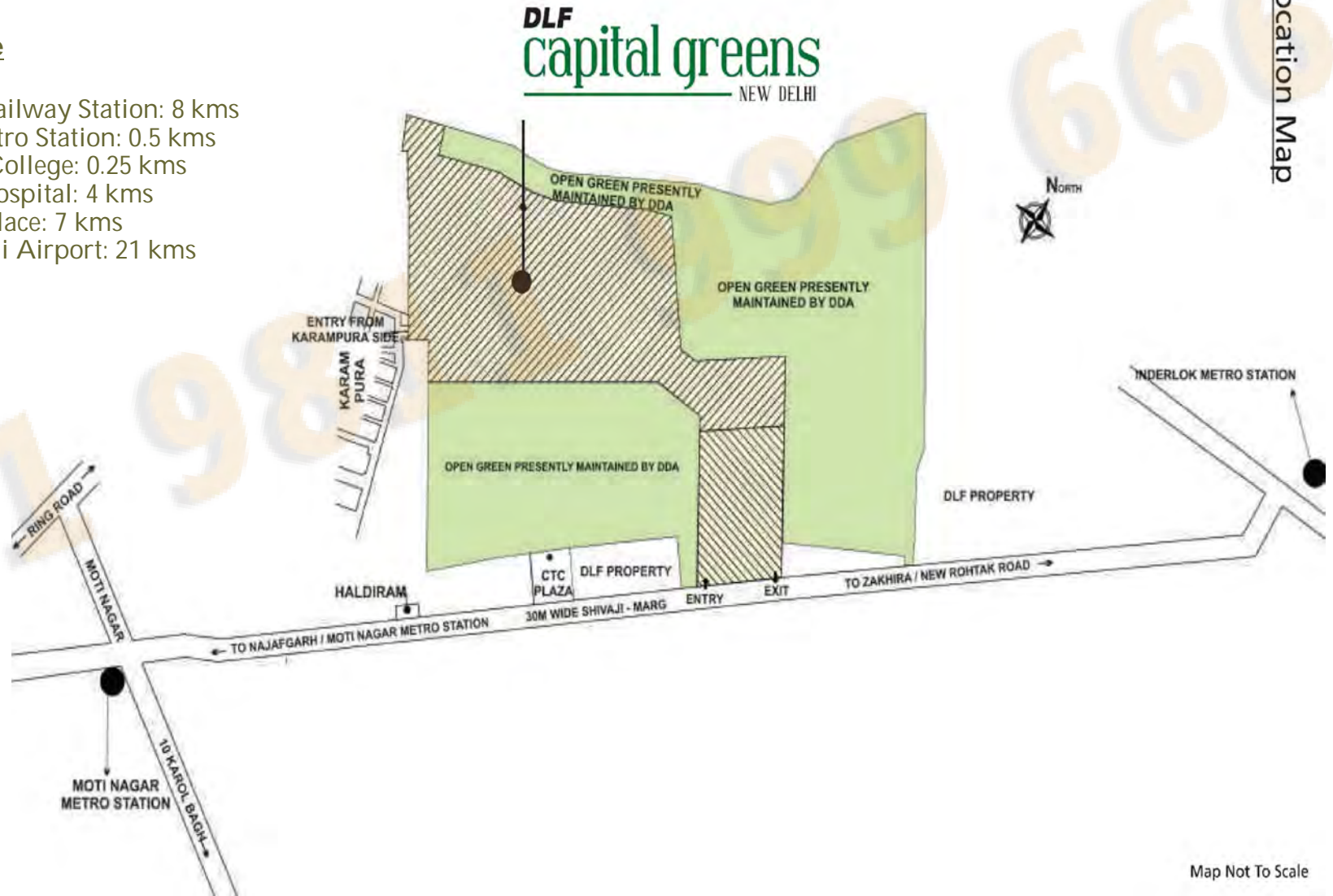
- ❑ 2/3/4 BHK Apartment
- ❑ Sizes 1210 sq ft to 2630 sq ft
- ❑ Located right in the heart of the city
- ❑ Well connected by road & metro network
- ❑ Next door to one of Delhi's largest proposed office complex
- ❑ Walking distance to high end commercial spaces and offices
- ❑ Next to convenient retail outlets and leisure destinations
- ❑ Surrounded by more than 100 Acres of maintained Greens
- ❑ Spacious and open design pattern

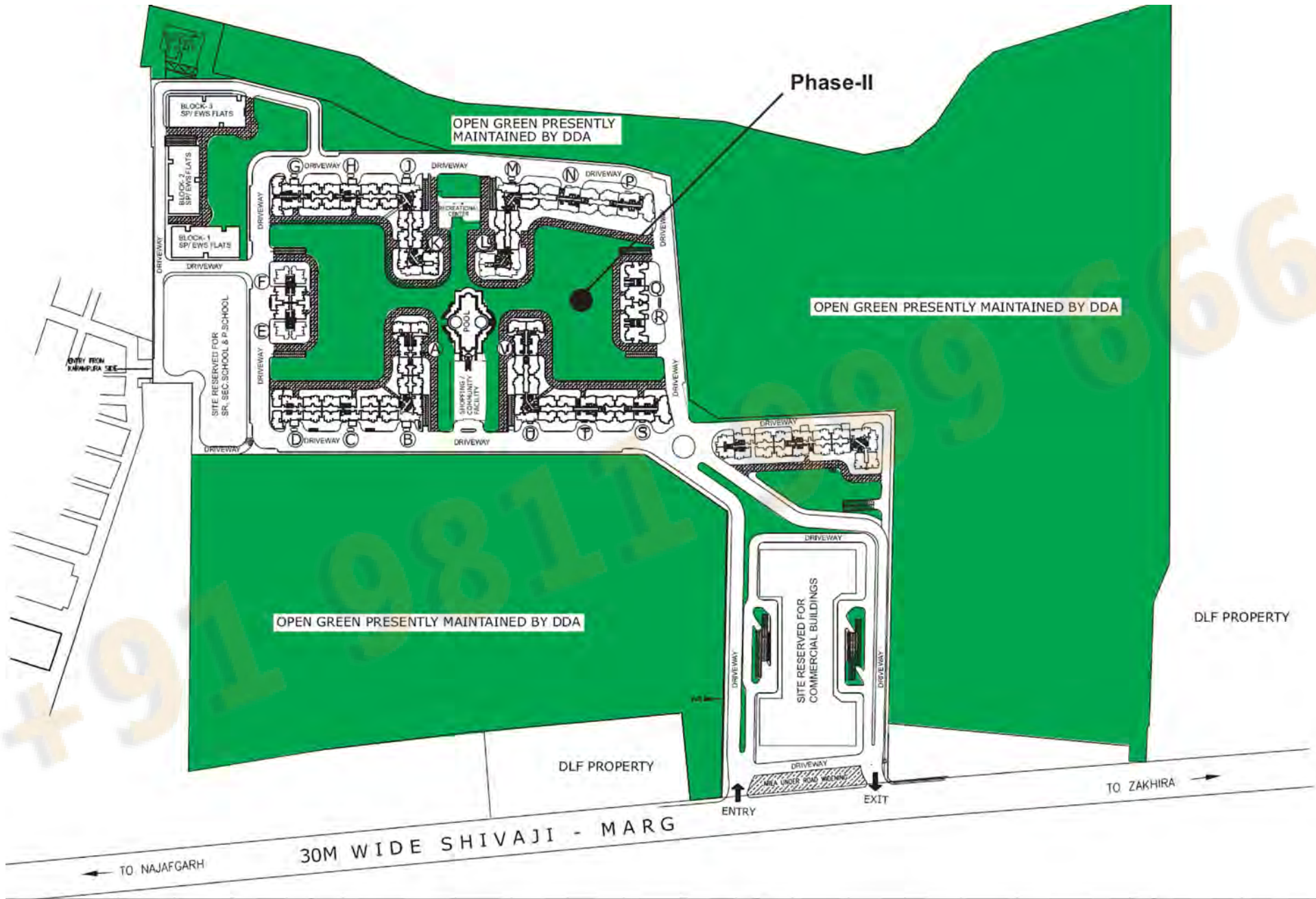
Location

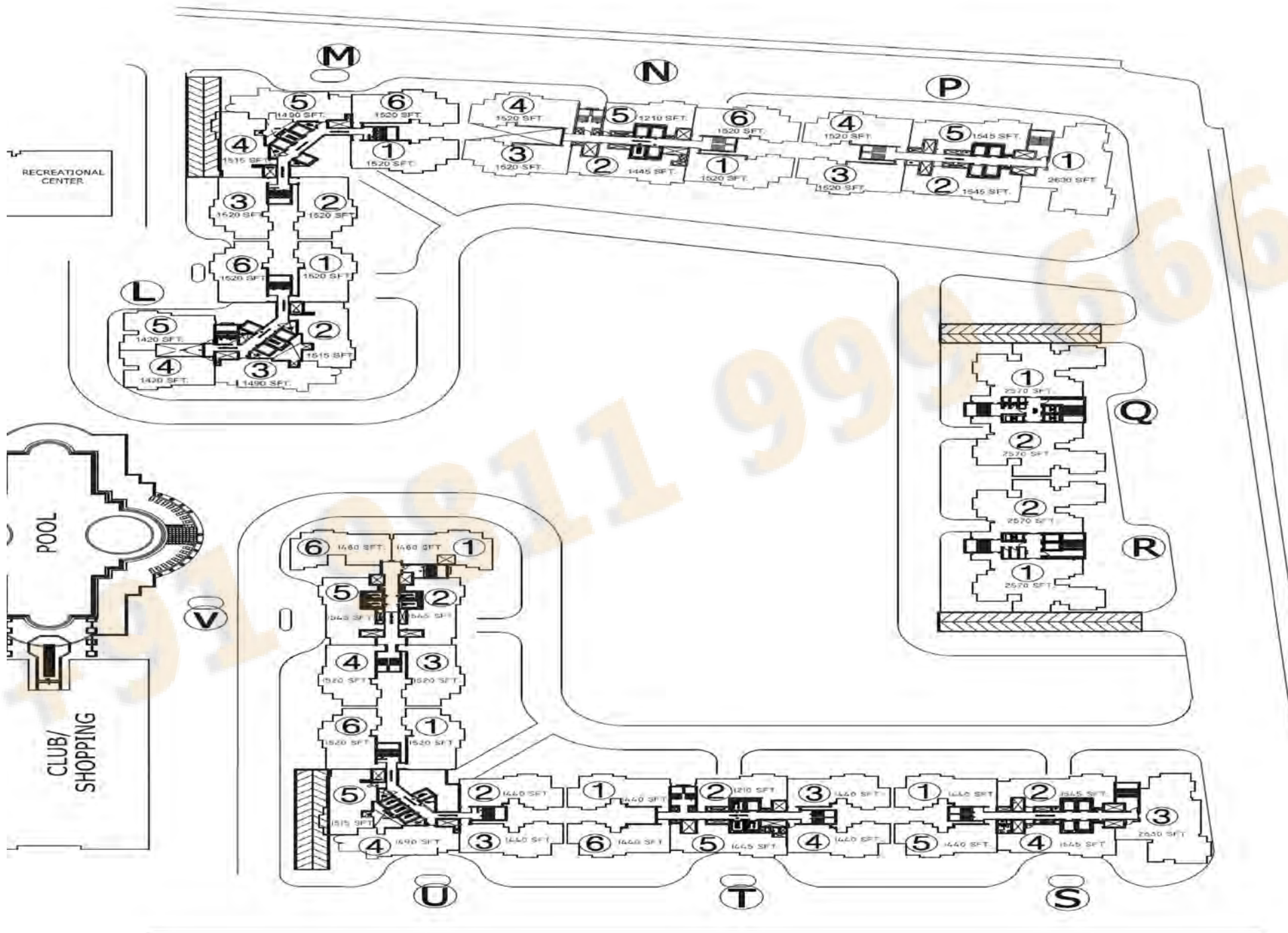
- DLF Capital Greens is located at Shivaji Marg, Delhi, The project shall be at a walking distance from the nearest Metro Station and is located next to a 70 acres green belt

Key Distance

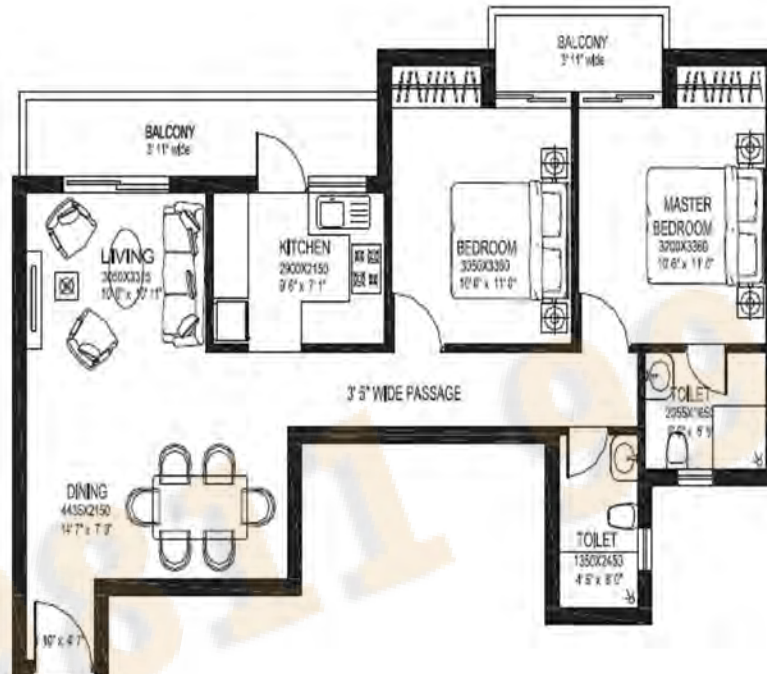
New Delhi Railway Station: 8 kms
Shadipur Metro Station: 0.5 kms
Deen Dayal College: 0.25 kms
Gangaram Hospital: 4 kms
Connaught Place: 7 kms
Indira Gandhi Airport: 21 kms







Floor Plan



Note: Loft for the storage purpose will be provided in every unit, wherever technically feasible.

PLAN NOT TO SCALE

TENTATIVE TYPICAL APARTMENT PLAN



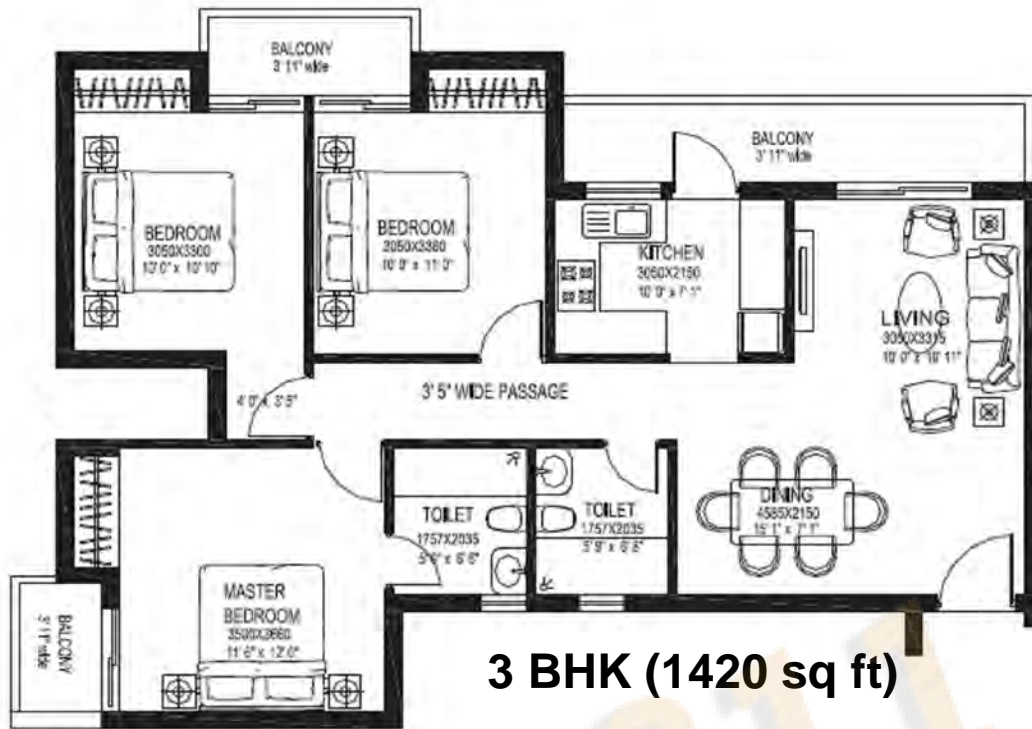
DLF RETAIL DEVELOPERS LTD.

Project

PHASE-II
DLF CAPITAL GREENS
 SHIVAJI MARG, NEW DELHI.

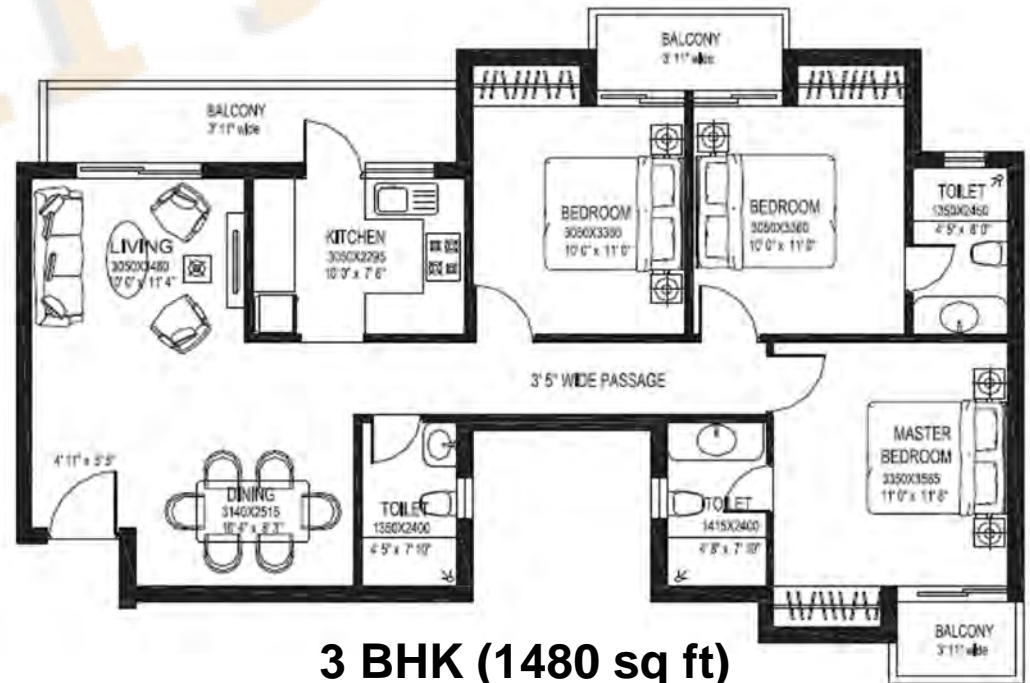
Tentative Saleable Area

1210 SQ.FT

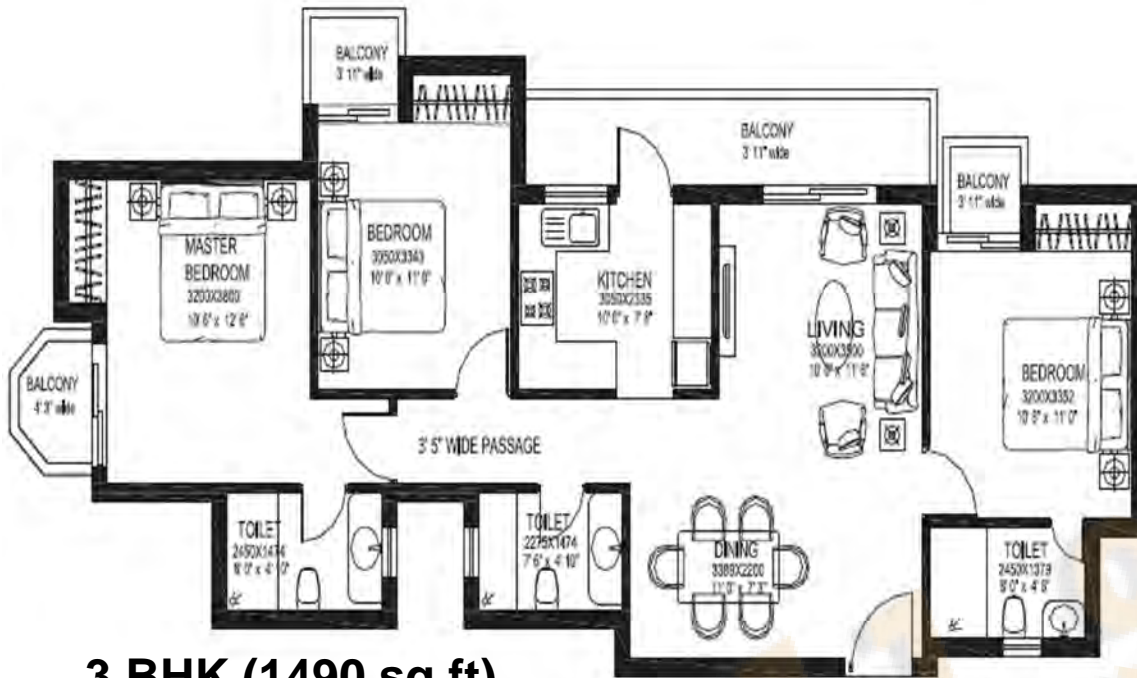




3 BHK (1445 sq ft)



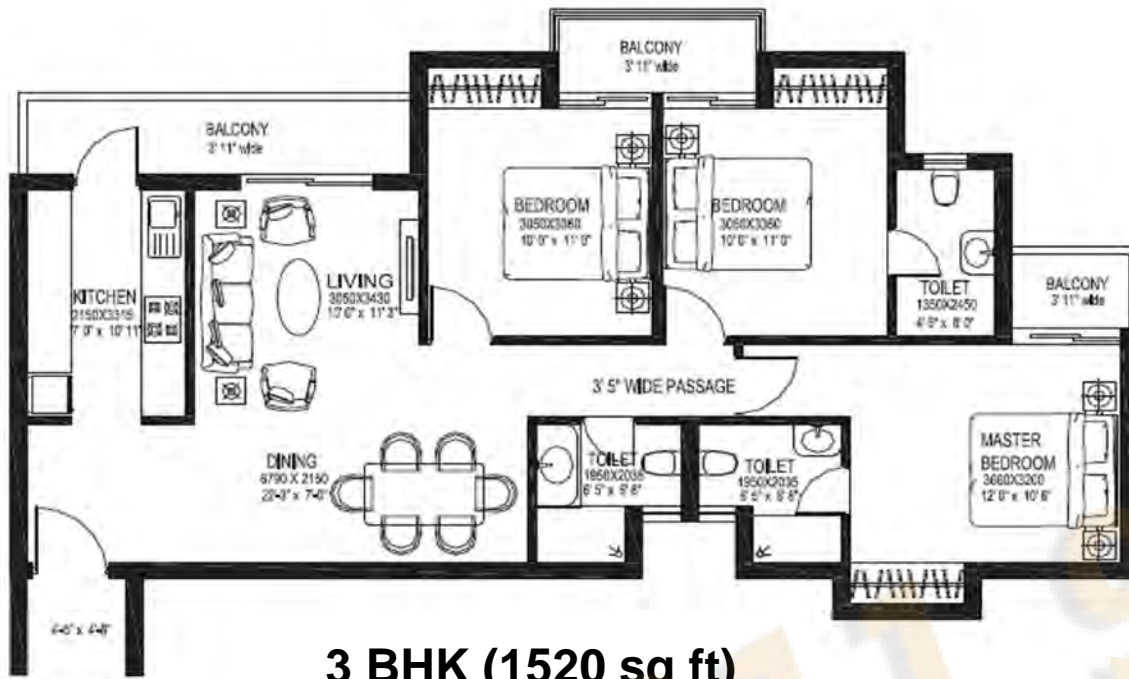
3 BHK (1480 sq ft)



3 BHK (1490 sq ft)



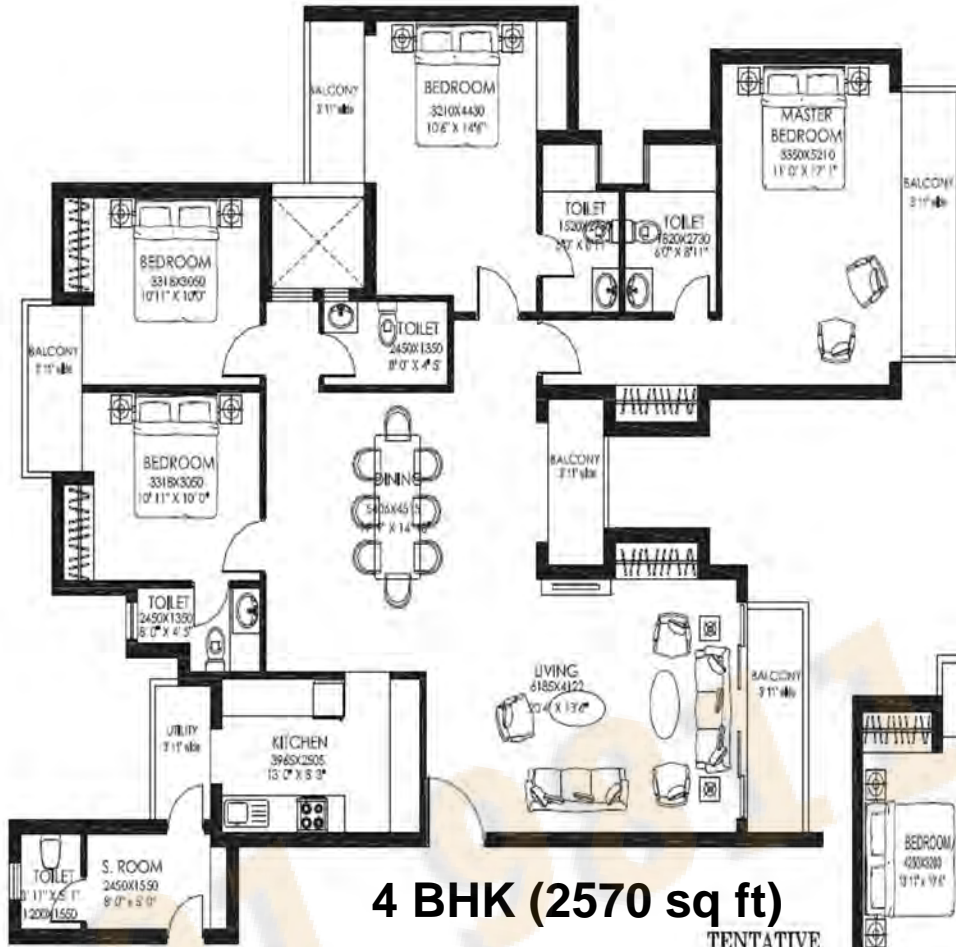
3 BHK (1515 sq ft)



3 BHK (1520 sq ft)



3 BHK (1545 sq ft)



4 BHK (2570 sq ft)
TENTATIVE



4 BHK (2630 sq ft)

Type	Size(Sqft)	Booking
2 BHK	1210	7.5 lac
3 BHK	1420	7.5 lac
3 BHK	1440	7.5 lac
3 BHK	1445	7.5 lac
3 BHK	1480	7.5 lac
3 BHK	1490	7.5 lac
3 BHK	1515	7.5 lac
3 BHK	1520	7.5 lac
3 BHK	1545	7.5 lac
4 BHK	2570	10 lac
4 BHK	2630	10 lac

About Developer

The DLF Group has charted its next growth steps to retain its leadership position in India. Already a major player in locations across the country, including key metro cities and urban centres, DLF, with over Six decades of experience, is focusing on strengthening its lateral and vertical business drivers. These include development of innovative business strategies, strengthening its professional resources and driving market penetration with an ear-to-the-ground approach that is adaptive to local market needs.

The group is capitalising on emerging market opportunities to deliver high-end facilities and projects to its wide base of customers by constantly upgrading its internal skills and resource capabilities. In line with its current expansion plans, the DLF Group has over 289 million sq. ft. of development across its businesses, including developed and on-going projects. Under its home, offices and shopping mall segments, DLF is credited with over 224 million sq. ft. of completed developments, while projects under construction represent over 45 million sq. ft across the three verticals.

Specifications

- **Living/Dining/Passage & Lobby within Apartment**

Floor	Vetrified tiles
Kitchen & Toilets	Anti Skid Ceramic Tiles
Bedrooms	Laminated Wooden Flooring
Balcony	Terazzo Tiles / Ceramic Tiles

- **Walls**

Living/ Dining/ Bedrooms/ Passage & Lobby within Apartment	Acrylic emulsion
Kitchen & Toilets	Combination of ceramic tiles, oil bound distemper and/or
Mirror Servant Room	Combination of ceramic tiles, oil bound distemper and/or Mirror

- **Ceilings**

Ceilings	Oil Bound Distemper
Servant Room	White Wash

- **Counters**

Toilets & Kitchen	Counters in Marble / Granite
------------------------------	------------------------------

- **Fittings / Fixtures**

- **Toilets & Kitchen**

Single Lever CP fittings, White Chinaware. Tower Rail / Ring (No bath tubs). Stainless Steel Double bowl, single drain board kitchen sink.

Servant Room Toilet	Conventional C.P. fittings & white chinaware
---------------------	--

- **Doors & Windows**

- **Internal Doors**

Polished / Painted frames made of Hardwood Entrance door- Teak veneered & polished shutter / Moulded skin door. Internal door – Painted flush shutters / moulded skin door.

External Glazings	Powder coated Aluminium
-------------------	-------------------------

Electricals

Modular type switches & sockets, copper wiring (fittings like fans, light fixtures, geysers, appliances etc. not provided). Back-up power not exceeding 6 KVA (for Apartments from 1200 sq.ft. upto 1450 sq.ft. area), not exceeding 7 KVA (for apartments from 1451 sq.ft. upto 1600 sq.ft. area) and not exceeding 9 KVA (for apartments from 2400 sq.ft. upto 2650 sq.ft. area).

Security System

Proximity Card Access Control, CCTV for Basement parking and Entrance lobby at Ground Floor. Boom barriers at entry & exit of the complex and at entry & exit of the basement parking

Facility Centre

Air-conditioned : Party Room, Gymnasium, Restaurant, Multi-purpose Hall and Banquet Hall. Swimming Pool, Change Rooms and Dispensary. Convenient Shopping Centre, Indoor Games - Card Rooms, Pool. Reading Lounge, Community Space for Elderly Citizens.

Book your apartment in DLF Capital Greens Phase-II, Shivaji Marg, Delhi in few easy steps below

- 1) Identify your apartment.
- 2) Booking amount Cheque in the name of "**DLF RETAIL DEVELOPERS LTD.**"
- 3) Receive booking confirmation, Receipts from DLF.
- 4) Any queries, contact Investinnest customer support in your respective country at numbers mentioned below.