

 **BESTECH**

  
**PARK VIEW**

*ananda*



**BESTECH**  
**PARK VIEW**  
**ananda**

Who imagined man would fly ?

Or that paperless messages would travel across oceans in seconds?

Those who imagined surged ahead just because they saw the future.

You too have the rare opportunity to use your foresight when you chose your home for the future. You too can share in the excitement of creation.

Park View Ananda, an exquisite group housing project coming up in Sec-81 Gurgaon, blends aesthetics with exquisite lifestyle! The ultra-luxurious apartments are equipped with **imported marble flooring** in the living room and elegant **wooden flooring** in all bedrooms. While all the rooms are fitted with **air-conditioners** for ultimate comfort, the joy of cooking will be heightened at the **modular kitchen**. Quite simply, there's nothing left to desire!

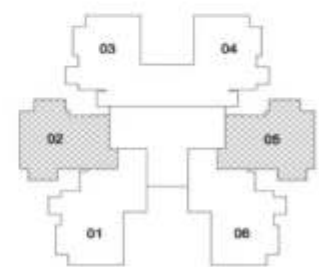
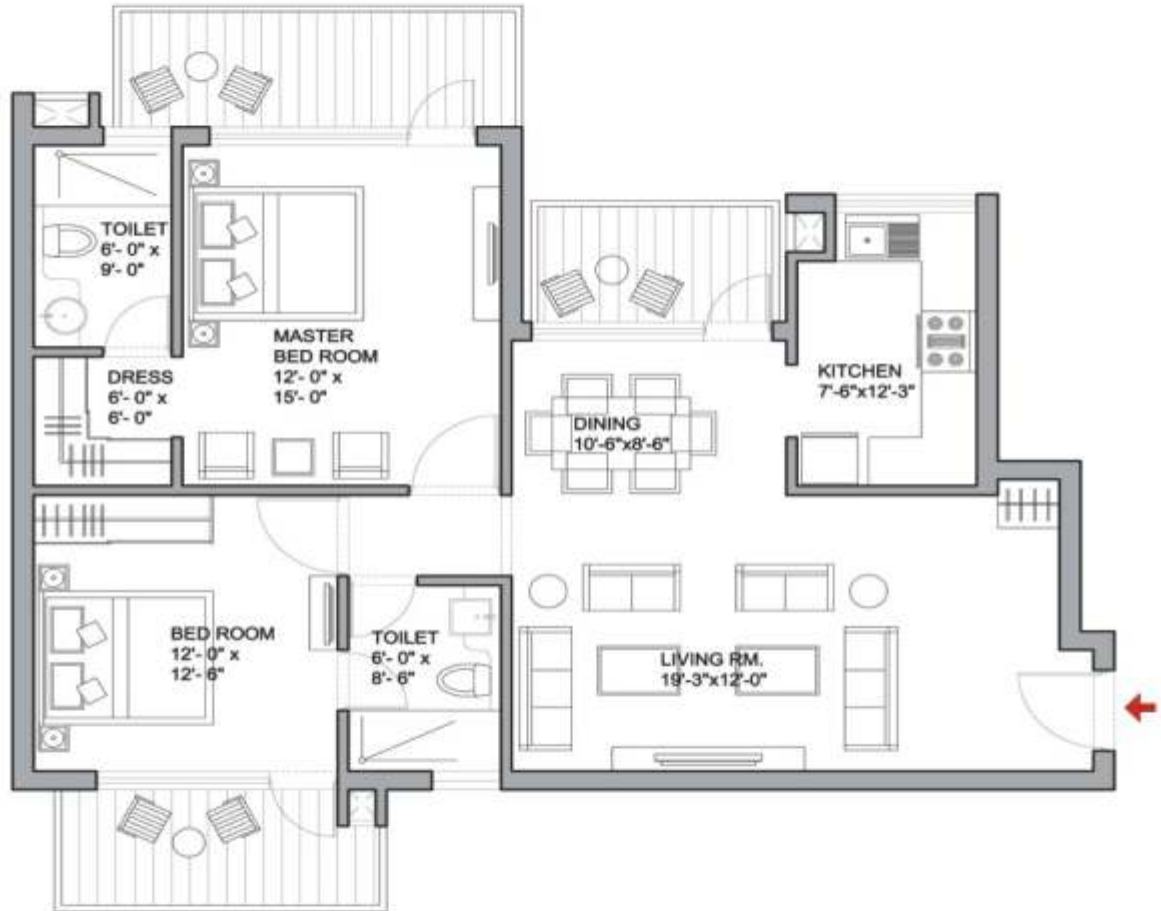
Do join us to see what life could be ...



**BESTECH**  
**PARK VIEW**  
*ananda*



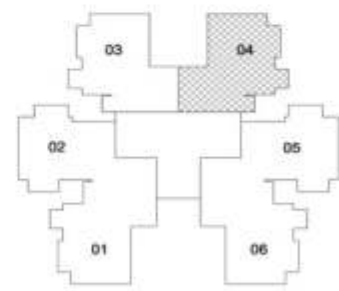
TYPE - 2BHK  
 SUPER AREA-1360 SQ.FT.



TOWERS A, B, C, D, E, F, G & I

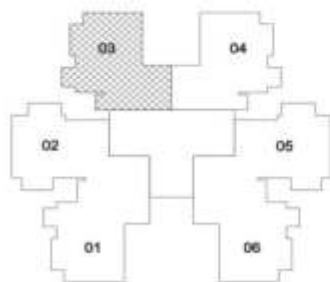
1sq.mt. = 10.764sq.ft.

TYPE - 3BHK  
 SUPER AREA-1645 SQ.FT.



TOWERS E, F & G

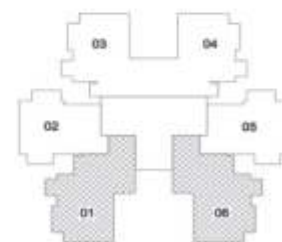
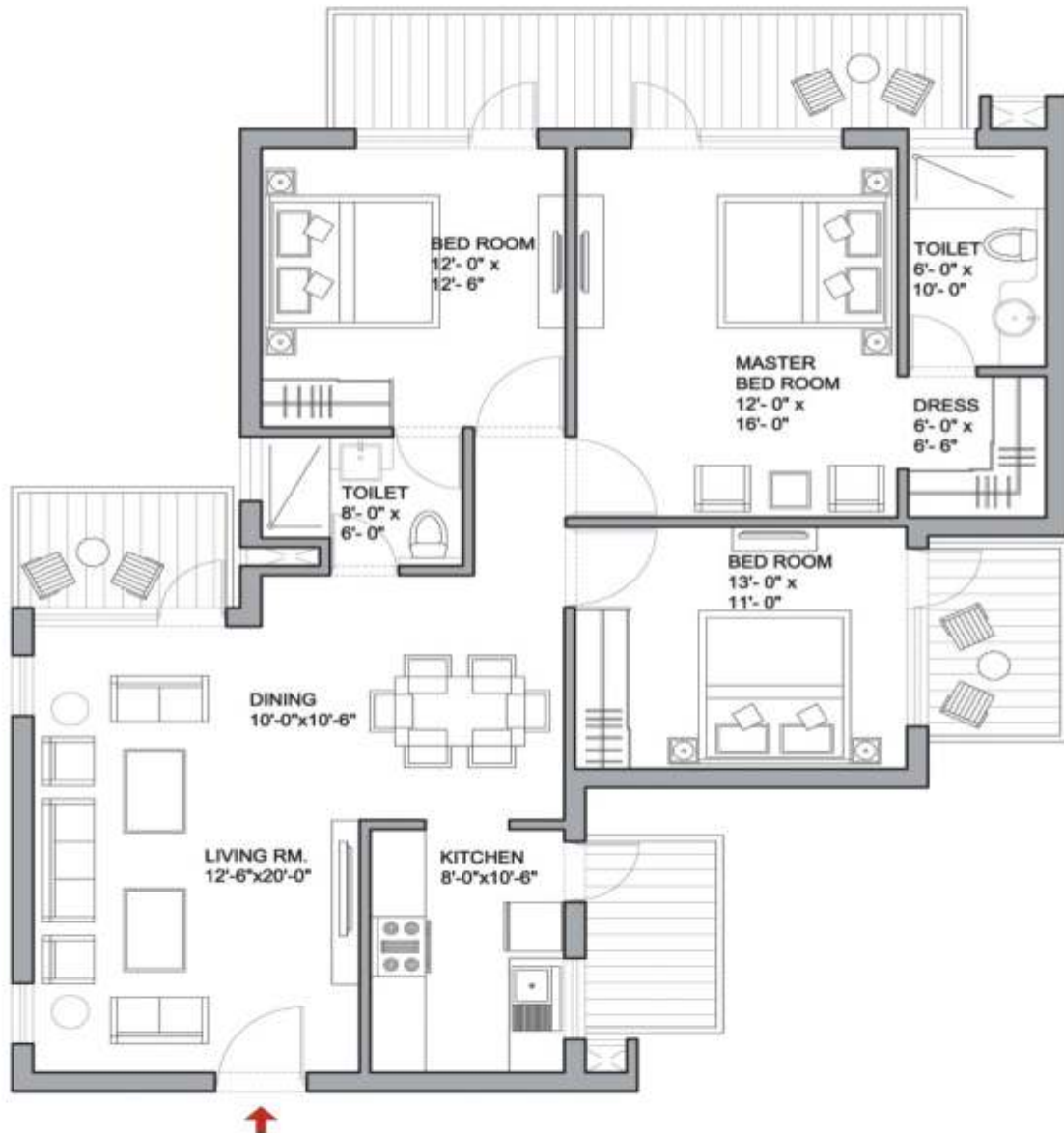
TYPE - 3BHK  
 SUPER AREA-1660 SQ.FT.



TOWERS E, F & G

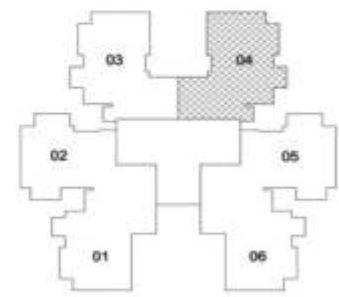


TYPE - 3BHK  
 SUPER AREA-1660 SQ.FT.



TOWERS B, C, D, E, F, G, & I

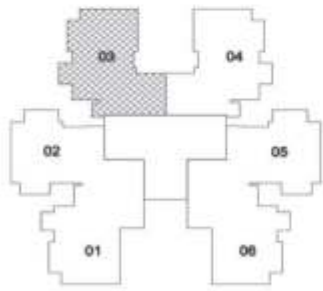
TYPE - 3BHK  
SUPER AREA-1790 SQ.FT.



TOWERS A, B, C, D & I



TYPE - 3BHK  
 SUPER AREA-1810 SQ.FT.



TOWERS A, B, C, D & I  
 01 & 06 only in Tower A

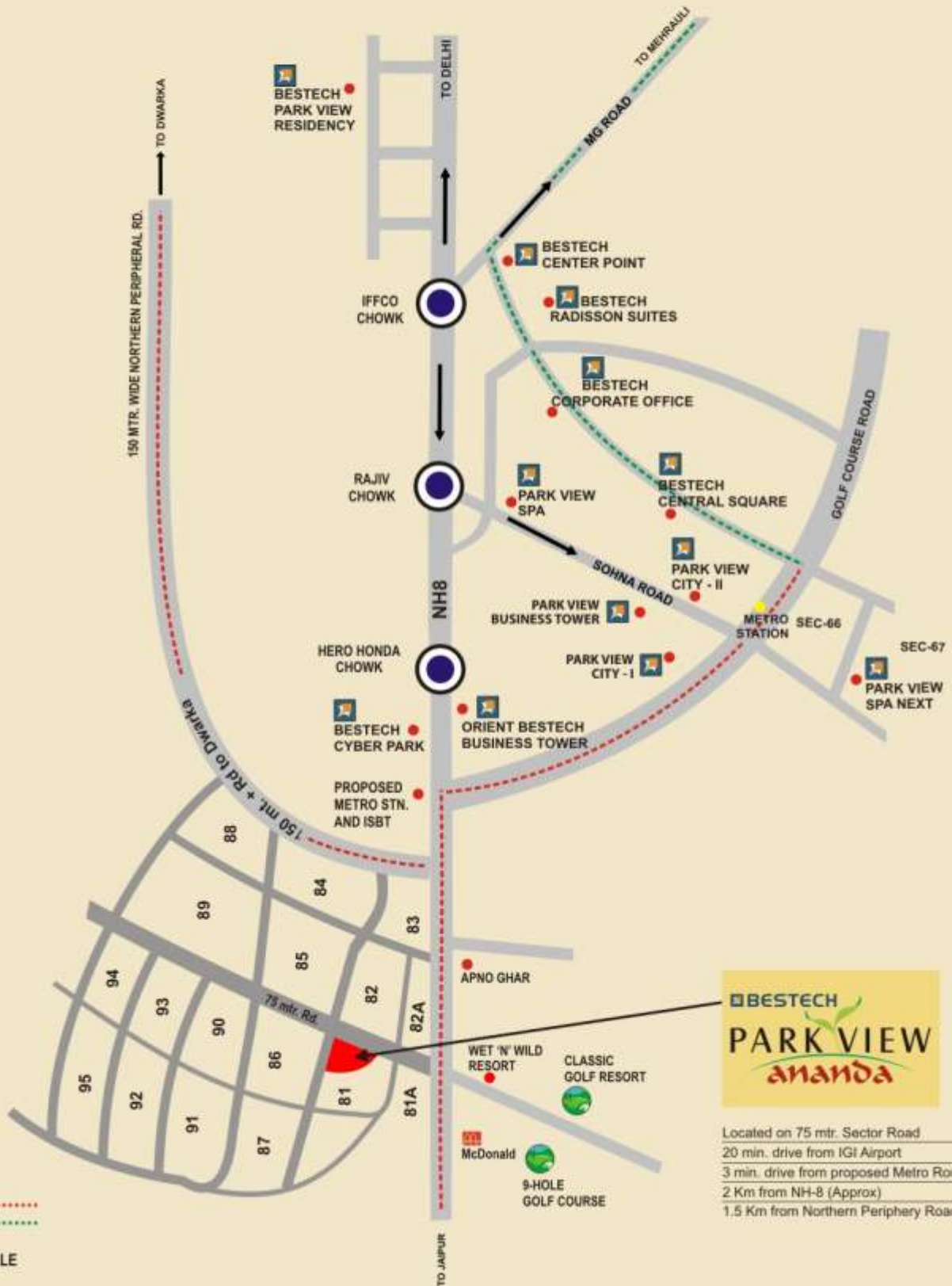


## SPECIFICATIONS

| LOCATION               | WALLS  | FLOORS                           | DOORS   | WINDOWS/<br>GLAZING               | OTHERS   |
|------------------------|--|----------------------------------|---|-----------------------------------|--|
| LIVING ROOM            | Acrylic Emulsion Paint                           | Imported Marble Flooring         | Hardwood door frame with European style flush panel | Anodized/ Powder Coated Aluminum  | <b>Air Conditioner in Living Room</b>  |
| BED ROOM               | Oil Bound Distemper                              | Wooden Flooring in all Bed Rooms | Hardwood door frame with European style flush panel | Anodized / Powder Coated Aluminum | <b>All Bed Rooms with Air Conditioner</b>  |
| KITCHEN                | 2' high Ceramic Tiles above counter rest painted | Ceramic Tiles                    | Hardwood door frame with European style flush panel | Anodized / Powder Coated Aluminum | Granite counters with Stainless steel sink with <b>Modular kitchen</b>   |
| TOILETS                | Ceramic Tiles & Oil Bound Distemper              | Ceramic Tiles                    | Hardwood door frame with European style flush panel | Anodized / Powder Coated Aluminum | Granite/Marble counters, Single lever CP fittings-Grohe/ Kohler or Equivalent, Wall hung WC, Provision for hot & cold water supply system. |
| SERVANT / UTILITY ROOM | Oil Bound Distemper                              | Ceramic Tiles                    | Hardwood door frame with flush panel                | Anodized/ Powder Coated Aluminum  |  |
| BALCONIES              |  | Anti Skid Ceramic Tiles          |   |                                   |  |
| LIFT LOBBIES           |  | Granite / Imp. or Indian marble  |   |                                   |  |
| EXTERNAL FACADE        | Permanent Texture / Paint Finishes               |                                  |   |                                   |  |

Note: All layout plans, floor and specifications are tentative and are subject to variation and modification as decided by company/relevant authorities and cannot form part of any offer or contract. Marble / Granite being natural materials have inherent characteristics of color and grain variation.

**BESTECH**  
**PARK VIEW**  
*ananda*



Located on 75 mtr. Sector Road  
 20 min. drive from IGI Airport  
 3 min. drive from proposed Metro Route  
 2 Km from NH-8 (Approx)  
 1.5 Km from Northern Periphery Road (Approx)

Metro Network  
 Proposed .....  
 Running .....

MAP NOT TO SCALE





**BESTECH INDIA (PVT.) LTD.**

Bestech House 124, Sector 44, Gurgaon- 122002

Tel: 91-124-4540077 Fax: 91-124-4540033

Email: [sales@bestechgroup.com](mailto:sales@bestechgroup.com), [www.bestechgroup.com](http://www.bestechgroup.com)